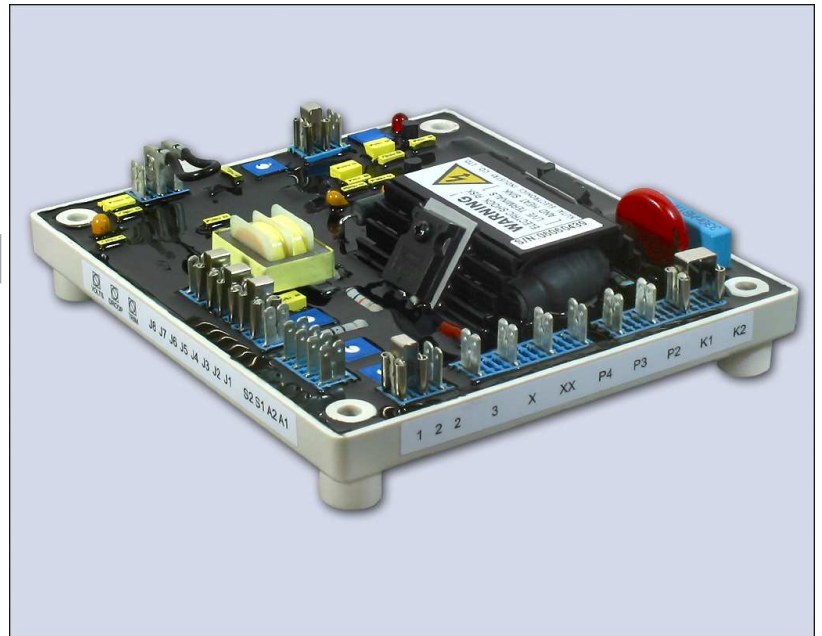


EA440

Self Excited Automatic Voltage Regulator Compatible with Newage* SX440

Features

- $\pm 1\%$ Regulation
- Can Be Use In Parallel Operation
- Adjustable DIP, TRIM & DROOP Functions
- Under Frequency Roll Off Protection
- Sensing Voltage Loss Protection
- Under Frequency LED Indicator
- Soft Start Voltage Ramping



* Use for reference purpose only, not genuine Newage product

Specifications

Sensing Input	Voltage	190 ~ 264 VAC, 1 phase 2 wire	Unit Power Dissipation	Max. 12 watt	
	Frequency	50/60 Hz selectable		External Volts Adjustment	$\pm 8\%$ with 1K Ω 1 watt trimmer
Output	Voltage	Max. 90 VDC at 207 VAC	Under Frequency Protection (UFRO)	Set point	95% Hz
	Current	Continuous 4 A Intermittent 10 A for 10 sec.		Slope	170% down to 30 Hz
	Resistance	Min. 15 Ω	Analogue Input	Max. Input	± 5 VDC
Voltage Regulation	$< \pm 1\%$ (with 4% engine governing)			Sensitivity	1V for 5% generator volts
Voltage Build-up	Residual volts at AVR terminal > 5 VAC		Droop Input	Input Resistance	1K Ω
Thermal Drift	0.04% per $^{\circ}\text{C}$ change in AVR ambient			Burden	10 Ω
Soft Start Ramping	2 sec.			Max sensitivity	0.07 A for 5% droop (PF=0)
				Max. input	0.33 A

Environment

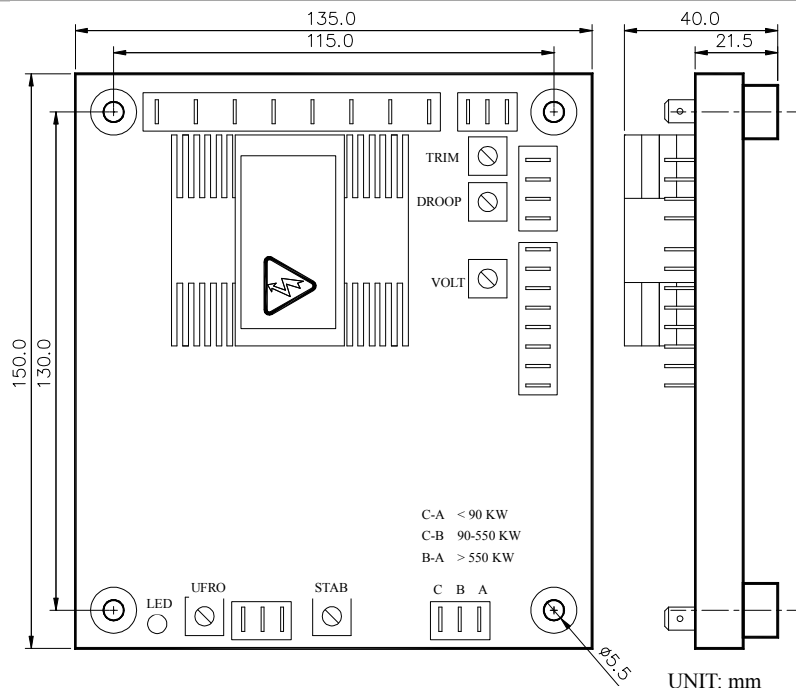
Vibration 3.3G @ 100 ~ 2K Hz

Relative Humidity $< 95\%$

Operating Temperature $-40 \sim 70^{\circ}\text{C}$

Storage Temperature $-40 \sim 85^{\circ}\text{C}$

Mechanical Specifications



AVR Controls Functions

VOLT	Voltage Adjustment
STAB	Stability Adjustment
U/F	UFRO Knee Point Set
DROOP	Droop Adjustment
TRIM	Analogue Input Adjustment
DIP	U/V Rate Set

Physical Specifications

Dimensions	150.0 (L) x 135.0 (W) x 40.0 (H) mm
Weight	418 g $\pm 2\%$

Please link to <http://www.kutai.com.tw> for detailed manual